



Baltimore Beach Charity Challenge

A Fundraiser to Support:

SIDEOUT
FOUNDATION

SECOND CHANCE
Retrain • Reclaim • Renew

BALTIMORE
boces
ANIMAL RESCUE & CARE SHELTER, INC.

the
ULMAN
CANCER
fund for
YOUNG
ADULTS



May 31 2014

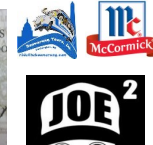
Registration 9a
Tournament 10a

\$500 per team of 10
or \$60 per individual

Rash Field | 300 Key Highway | Baltimore MD 21230



Donations and Sponsorships Kindly Provided By:



Baltimore Beach Charity Challenge



ABOUT

Baltimore Beach

Located at Rash Field in Baltimore's Inner Harbor, Baltimore Beach hosts seven beach volleyball courts on 1000+ tons of sand. A place open to all, where local, visitor, beginner to expert can meet and play organized games. Baltimore Beach organizes men's, women's, coed, 2's, 4's and 6's league play Sunday through Friday evenings and 'drop-in' play most weekend days from spring thru fall. Baltimore Beach has over 50,000 annual visits including it's 2,500+ participants each week during the spring and summer sessions.

Charity Challenge

Charity Challenge was an idea originally drafted by the founder of Baltimore Beach, Todd Webster. In 2013, Catherine Bross volunteered to assist in Todd's goals of hosting a successful event to support charities and organizations which have a direct impact on the City of Baltimore and it's surrounding areas. Together they hope to create an opportunity for participants to have fun while raising money and community awareness.

CHARITIES & PARTNERSHIPS

The Side-Out Foundation

The Side-Out Foundation is a non-profit organization that was established in 2004 to advance breast cancer clinical trials, increase patient support services and educate communities through the sport of volleyball. The foundation offers practical support for fundraising as well as educational information to help athletes, coaches and communities become effective advocates for breast cancer. It contributes the funds to organizations that serve breast cancer patients, whether it be in the form of research, medical services or patient support.

www.Side-Out.org

Baltimore Animal Rescue Care Shelter, Inc. (BARCS)

Baltimore Animal Rescue and Care Shelter, Inc., is a non-profit organization created in July 2005 to take over the operations of the city shelter and to work directly with Baltimore City Animal Control. BARCS takes in homeless, neglected, and unwanted animals in Baltimore City. BARCS' mission is to accept and care for all animals in need and promote responsible pet ownership for a more humane community in Baltimore City.

www.BaltimoreAnimalShelter.org

Second Chance

Second Chance's mission is to retrain and create employment for displaced and unemployed workers in deconstruction methods; reclaim building material to reduce demolition debris overloading landfills; and renew materials to preserve the region's rich architectural heritage. As a result, Second Chance provides jobs and a green collar workforce, protects the natural environment, and preserves our architectural heritage.

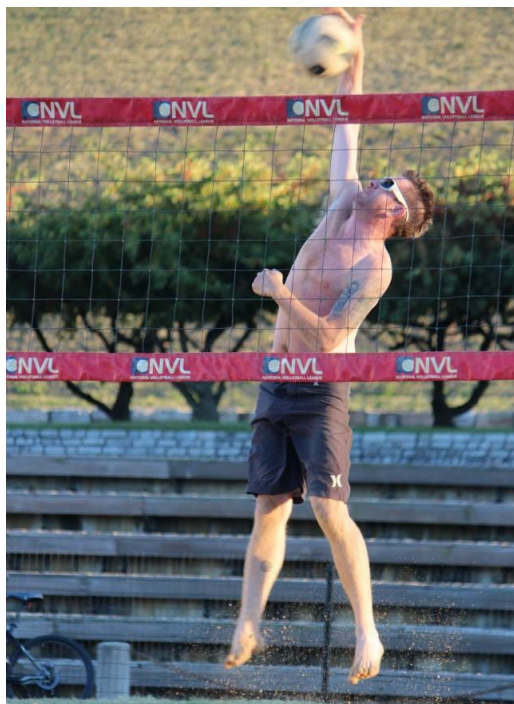
www.SecondChanceInc.org

The Ulman Cancer Fund for Young Adults

The Ulman Cancer Fund for Young Adults changes lives by creating a community of support for young adults and their loved ones as they fight cancer and embrace survivorship. Since 1997, UCF has worked with the local community and it's national partners to provide a platform to empower, educate and activate young adults affected by this disease.

www.UlmanCancerFund.org

Baltimore Beach Charity Challenge



SCHEDULE

Registration, Warm Up & Free Clinics 9a

Team registration, warm ups and free clinics provided by The Side-Out Foundation.

Individual Round Robin Tournaments 10a

All teams will be grouped and face other teams in a round robin style tournament.

Lunch & Free Time 12p

Open time for lunch, additional practice or speaking with sponsors.

Double Elimination Tournaments 2p

Teams will be re-grouped to face one another in double elimination style tournaments.

FORMAT

Teams

Teams of 10 players will select a single charity to represent for 6 player versus 6 player matches. There must be an equal number of players from each gender in play at all times.

Scoring

Rally scoring will be used for all games. First to 25, leading by 2 or more points is the winner.

Individual Round Robin Tournaments

Teams will be grouped together to play in a round robin style tournament. Teams will play multiple games against other teams in their grouping. Overall rankings will be determined at the conclusion of the Individual Round Robin Tournaments.

Double Elimination Tournaments

Teams from each group will move forward to the second half of the day to play in double elimination style tournaments against teams from other groupings. A blind draw bracket will be used to determine tournament scheduling. Teams will play single game matches and will continue to advance through the tournament until they have 2 losses.

PRIZES

Tournament

Prizes are provided to top teams and overall tournament winners.

Contests & Giveaways

There will be contests for best dressed and most supportive teams and additional giveaways to individual players throughout the day.

COSTS

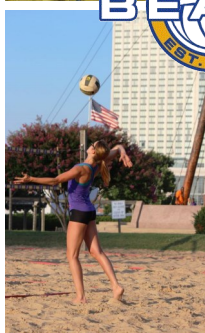
Teams & Individuals

The cost is \$500 for a team of 10 or \$60 for an individual player.

Individual placement on a team is not guaranteed.

Spectators

There is no charge for spectators... all are welcome!



Baltimore Beach Charity Challenge

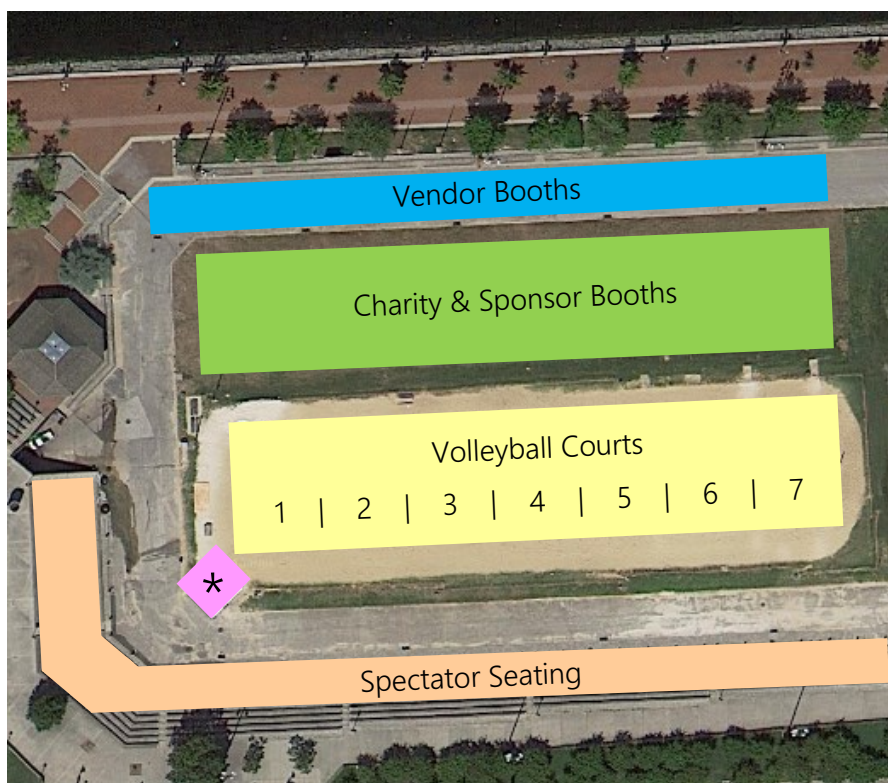
LOCATION

Baltimore Beach

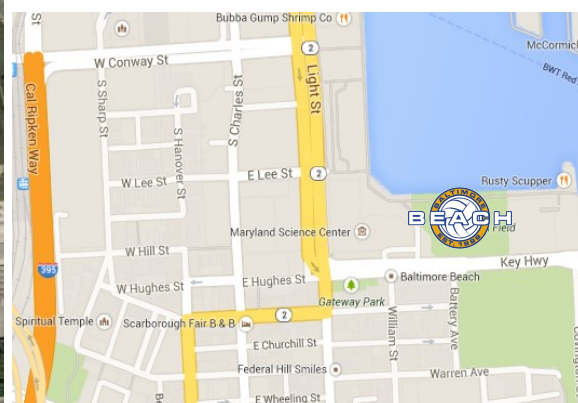
Rash Field is located in Federal Hill at 300 Key Highway, Baltimore 21230, directly next to the Maryland Science Center.

Parking

Metered street parking is available at multiple points along Key Highway. Garage parking is available at an additional cost at the Rusty Scupper Garage.



* - Registration Booth



TOURNAMENT ENTRY FORM

For Team Registration Only... Individuals must email charity@baltimorebeach.com for registration.

Team Name _____ Charity (circle one)



Team Captain _____ Email _____ Phone _____

Roster

	Player Name	Email
1	(Captain)	
2		
3		
4		
5		
6		
7		
8		
9		
10		

Please Detach and Return To: Todd Webster, 1317 S Hanover Street, Baltimore MD 21230